

color palette

TOP WEDDING COLOR PALETTES
for your wedding flowers



ANAPHORA
FLORAL DESIGN



welcome

We are so
happy you are here!

Do you want a magical wedding with distinctive, and exquisite floral arrangements that take your breath away?

Your wedding flowers should reflect your love story. So whether you dream of a lakeside wedding, a farm-to-table wedding in a field, or anything in between, your one-of-a-kind wedding flowers will be unforgettable.

Considering the simplest details to the largest focal points, we work with you to create the floral arrangements that you've been dreaming of since you said, "YES!"

Get inspired as you start planning your wedding color palette for 2023/2024. From classic white & green to terra cotta & burgundy, the combinations are some of the most requested. Each can change with a slight seasonal variation for to add any variation you are dreaming of!

What's your color palette?

GET EVEN MORE COLORS!

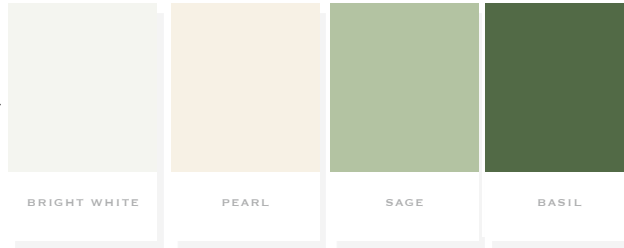
Don't know your color palette? Looking for something different? Let us help you design your your color palette and wedding flowers!

2023
PANTONE®
color of the year

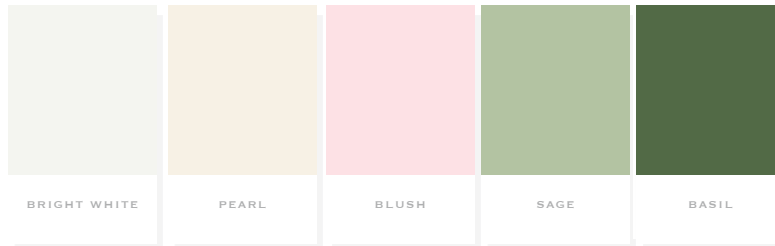
VIVA MAGENTA

color palettes

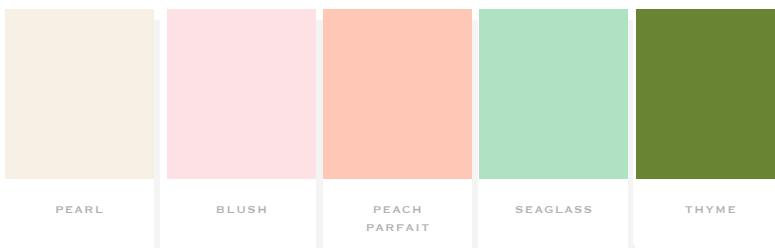
white & green



blush



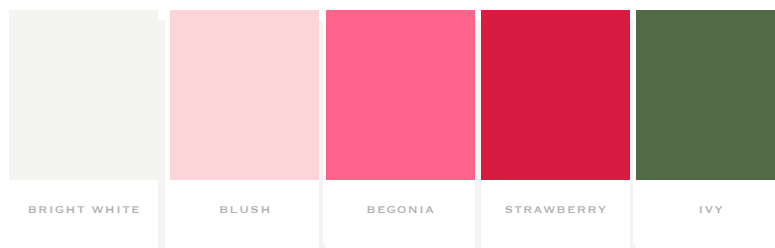
peach



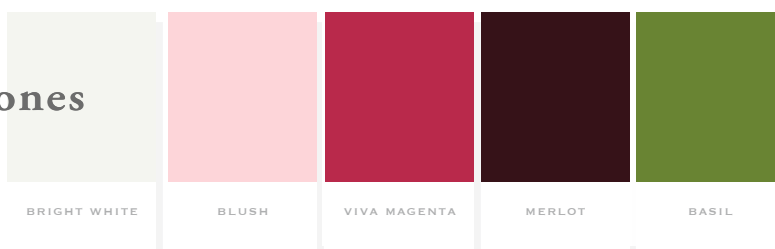
earth tones



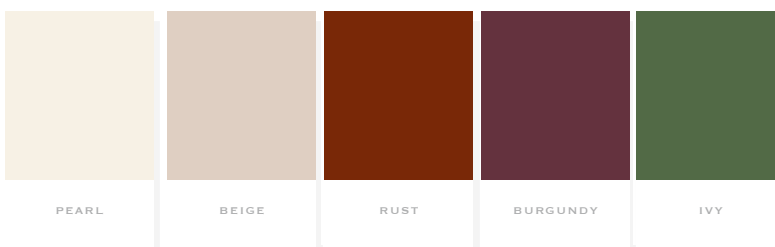
pinks



jewel tones

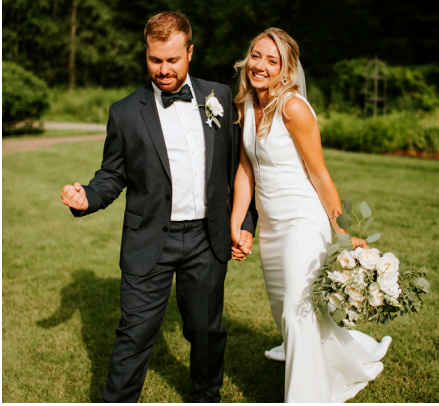


rust



color palette

CLASSIC WHITE & GREEN



White and green is a popular choice for your wedding flowers palette. They have a elegant simplicity to them, yet classic and modern and graceful. White flowers symbolize innocence.

CHECK YOUR DATE



RANUNCULUS



DAHLIA



GARDEN
ROSE



SWEET PEA



ASTILBE



ASTRANTIA



STOCK



BERRIES



LISIANTHUS



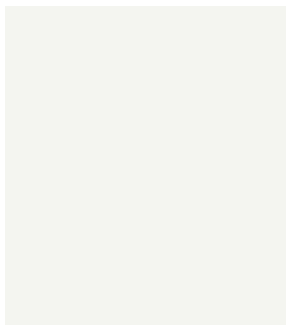
JASMINE



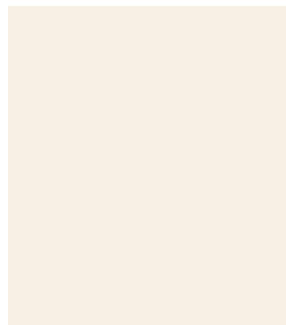
EUCALYPTUS
SILVER DOLLAR



EUCALYPTUS
PARVIFOLIA



BRIGHT WHITE



PEARL



SAGE



BASIL



color palette

ELEGANT BLUSH



Blush is a favorite color palette by many. The shades of blush have a soft, romantic and feminine quality them. Blush also has various interpretations and can lean towards champagne, peach or pink and even mauve at times.



GARDEN
ROSE



RANUNCULUS



GARDEN
ROSE



BUTTERFLY
RANUNCULUS



ASTILBE



ROSE



STOCK



SPRAY ROSE



LISIANTHUS



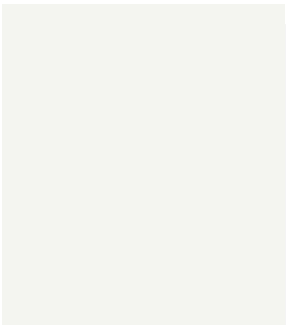
EUCALYPTUS
SEEDED



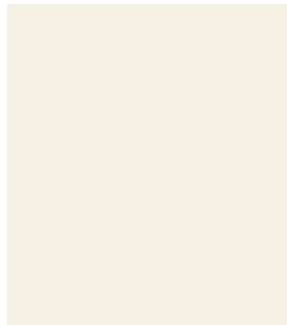
EUCALYPTUS
SILVER DOLLAR



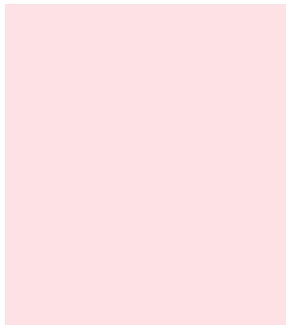
VIBURNUM



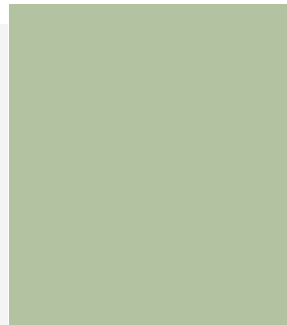
BRIGHT WHITE



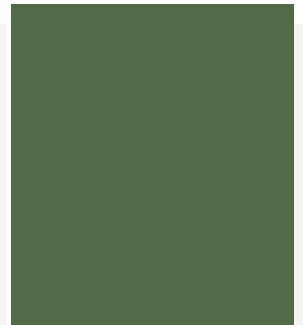
PEARL



BLUSH



SAGE



BASIL



color palette

PEACHY KEEN



Peach and cream with hints of blush and pink have no short color beauty here! We love the touches of light blue and lavender options also. It's so romantic and beachy. With Cafe-au-lait dahlias, ranunculus and a bit of clematis, this elopement is absolutely stunning.



RANUNCULUS



DAHLIA



ANEMONE



CLEMATIS



RANUNCULUS



TWEEDIA



GARDEN
ROSE



BERRIES



STOCK



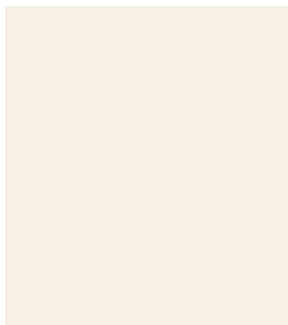
PENNYCRESS



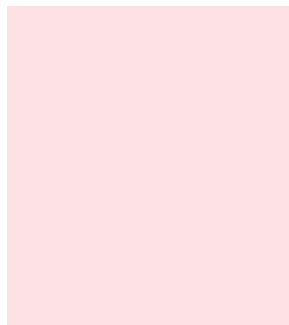
PITTOSPORUM



SALAL
(LEMON LEAF)



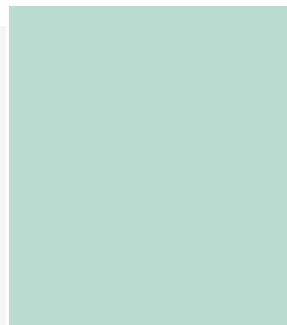
PEARL



BLUSH



PEACH
PARFAIT



SEAGLASS



THYME



color palette

EARTH TONES



Earth tones wedding flowers is a romantic color palette. A little champagne, a bit of blush, peach and just a hint of lavender makes for the perfect color palette for your wedding arrangements.



RANUNCULUS



ANEMONE



QUICKSAND
ROSE



BUTTERFLY
RANUNCULUS



ASTILBE



GARDEN
ROSE



STOCK



TOFFEE
ROSE



LISIANTHUS



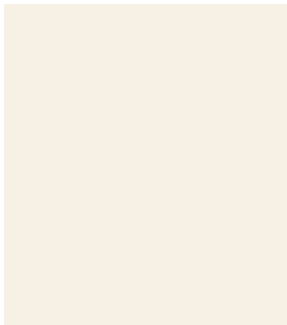
JASMINE



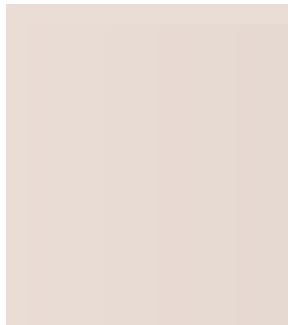
EUCALYPTUS
SILVER DOLLAR



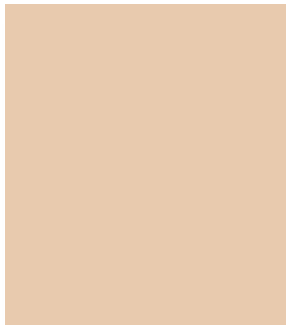
EUCALYPTUS
SEEDED



CREAM



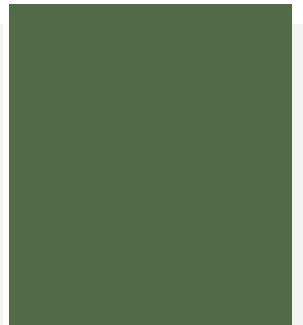
CHAMPAGNE



WARM PEACH



CAMEL



MOSS



color palette

STRAWBERRY FIELDS



This slightly monochromatic shades of strawberry pinks and light pink are so pretty if you want a pop of color in your wedding flower arrangements. If it's a bit too strong for your ceremony, you can go with the lighter shades and incorporate the brighter colors into your reception tables for a fun yet elegant look.



PINK
RANUNCULUS



PEACH
GARDEN ROSE



PEONY



BUTTERFLY
RANUNCULUS



PINK
GARDEN ROSE



SWEET PEA



BLUSH
RANUNCULUS



BERRIES



SPRAY ROSE



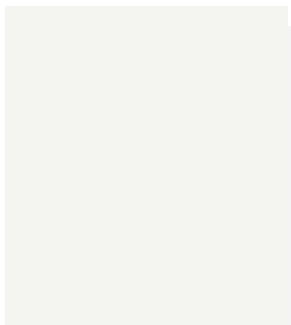
PISTACHIO



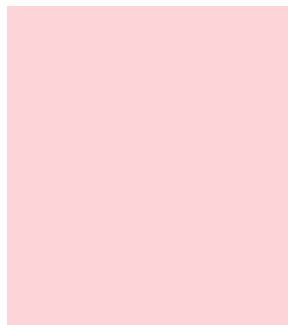
PITTOSPORUM



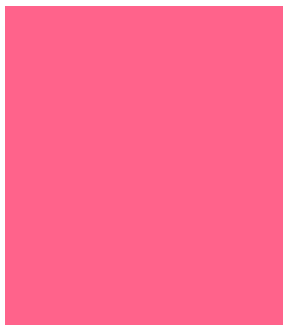
EUCALYPTUS
SEEDED



BRIGHT WHITE



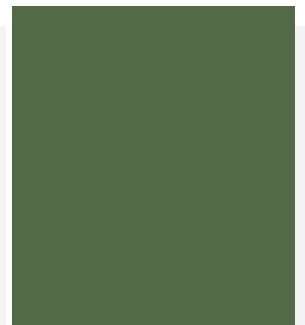
BLUSH



BEGONIA



STRAWBERRY



MOSS



color palette

JEWEL TONES



Jewel tones of pink, plum, peach and reds are fantastic for any season of your wedding. This wine inspired color palette has no shortage of sophisticated elegance here. The chandelier and table centerpieces are boasting with color for this bride's dream.



GARDEN
ROSE



ANEMONE



RANUNCULUS



BUTTERFLY
RANUNCULUS



RANUNCULUS



CLEMATIS



GARDEN
ROSE



SCABIOSA



SPRAY 'ROSE



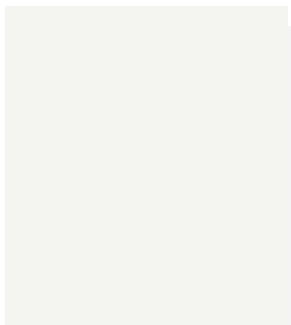
ITALIAN
RUSCUS



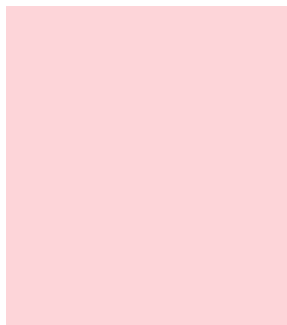
SOUTHERN
SMILAX



EUCALYPTUS
SEEDED



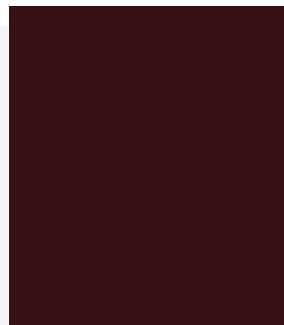
BRIGHT WHITE



BLUSH



VIVA MAGENTA



MERLOT



BASIL



color palette

FALL FOR RUST



Take your neutrals up a little. The toffee, cream, rust and burgundy flowers are the perfect Fall color palette. The warmth of the earthy hues and the berry hue of the burgundy will wow your guests.



RANUNCULUS



ANEMONE



GARDEN
ROSE



MUMS



COSMOS



CLEMATIS



DAHLIA



TOFFEE
ROSE



LISIANTHUS



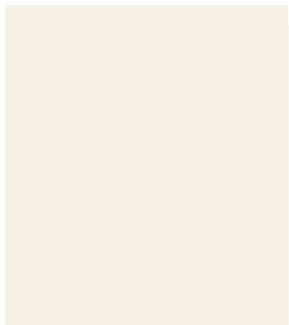
SPRAY
ROSE



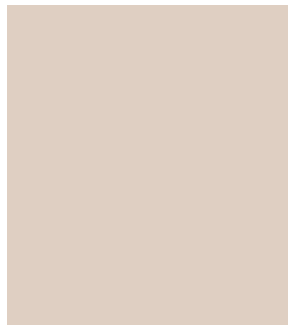
BAY LEAF



EUCALYPTUS
SEEDED



PEARL



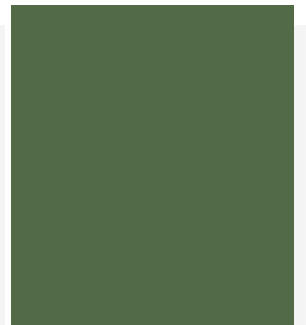
BEIGE



RUST



BURGUNDY



IVY



Thank you!

CONTACT


What color palette are you dreaming of?

*We offer complementary 30 minute floral sessions.
Let's chat about your wedding flowers and how we can help
design your color palette options.*



BOOK YOUR FLORAL SESSION

 adriane@anaphoraflowers.com

 802-730-9088

 524 Elmore Pond Road
Wolcott, VT 05680

let's connect



@anaphoraflowers

